

## Grade 1. Major Scales

## Question 1

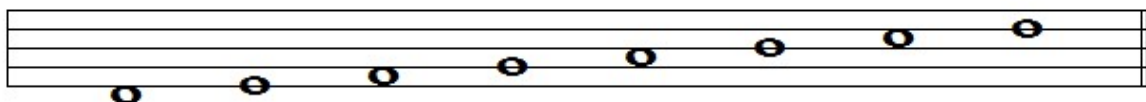
Add the correct clef and any necessary sharp or flat signs to make the scale named below. Do not use a key signature.



G major

## Question 2

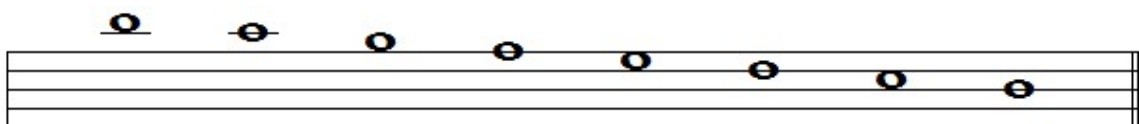
Add the correct clef and any necessary sharp or flat signs to make the scale named below. Do not use a key signature.



F major

## Question 3

Add the correct clef and any necessary sharp or flat signs to make the scale named below. Do not use a key signature.



D major

Now check your answers with the MTO website.